

APPLYING THE V_0 TO
EXGAL SOURCES

TOPCAT:

GET SUBSET FROM 3FGL FERMI CATALOGUE

+

BROADCAST SUBSET TO ALADIN

TOPCAT

File Views Graphics Joins Windows VO Interop Help

Table List

- 1: J_ApJS_218_23_table4
- 2: J_ApJS_218_23_table8
- 3: J_ApJS_218_23_table3
- 4: vizier_votable.vot

Current Table Properties

Label: J_ApJS_218_23_table4
Location: J_ApJS_218_23_table4
Name: J_ApJS/218/23/table4
Rows: 4,984 (6 apparent)
Columns: 26
Sort Order: 3FGL
Row Subset: ALL NLSY1
Activation Action: (no action) ☐ Bro

SAMP

Messages:

134 / 1753 M

TOPCAT(1): Table Browser

Window Subsets Help

Table Browser for 1: J_ApJS_218_23_table4

	recno	3FGL	LC	Na	Sp	RAJ2000	DEJ2000	GLON	GLAT
659	659	J0325.2+3410	LC	2	1	51.313	34.171	155.833	-18.1
1651	1651	J0849.9+5108	LC	1	1	132.482	51.145	167.603	39.1
1827	1827	J0948.8+0021	LC	3	1	147.223	0.363	236.59	38.1
3011	3011	J1505.1+0326	LC	2	1	226.278	3.449	2.237	50.1
3390	3390	J1644.4+2632	LC	1	1	251.123	26.542	46.465	38.1
4265	4265	J2007.8-4429	LC	2	1	301.971	-44.498	355.424	-31.1

TOPCAT(1): Row Subsets

Window Subsets Display Interop Help

Row Subsets for 1: J_ApJS_218_23_table4

ID	Name	Size	Fraction	Expression
1	All	4984	100%	
2	NLSy1	3	0%	Class == "nlsy1"
3	Seyfert	1	0%	Class == "sey"
4	NLSY1	2	0%	Class == "NLSY1"
5	FBQS	1	0%	\$2 == "J1644.4+2632"
6	ALL NLSY1	6	0%	2 4 5
8	Aladin	0	0%	

OK Cancel

ALADIN: OBTAIN RADIO SED (SPECFIND)

Aladin v9.0 *** BETA VERSION (based on v9.003) ***

File Edit Image Catalog Overlay Coverage Tool View Interop Help

Location: 236.59330 +38.71476 Frame: Gal

Fermi color

Server selector

Others: HIPS File all VO Watch FOV... Tools...

Image servers: Aladin images Others...

Catalog servers: All VizieR Surveys Missions SIMBAD D MOC Others...

Specify a target, and a catalog name or identification...

Target (Gal): 236.7402 +39.4352 Grab co...

Catalog: specfind Radius: 98.48° All columns Whole catalog

Info. Coverage (MOC) Density map

... don't know which catalog ? Select the potentially interesting ones with words/keywords !

Author, free text...:

Wavelength: Radio IR optical UV EUV X-ray

Mission: AKARI ANS ASCA BeppoSAX CGRO Chandra

Astronomy: Abundances Ages AGN Associations Atomic_Data

Reset Clear SUBMIT Close ?

90.72° x 38.31°

VIII/85A/spectra - RAJ2000 - [deg] Right ascension (J2000) of source

Search

V	Seq	n	Name	N	a	b	nu	S(nu)	e S(nu)	RAJ2000	DEJ2000	zSim	SED	Radio+...	beam
VizieR	40469	0	GB6 B0946+0036	11	0.3	1.24	4850	2.95e+02	5.9e+01	147.2388	0.3733	zSim	SED	Radio+Opt	108
VizieR	40469	0	87GB 094623.9+003620	11	0.3	1.24	4850	3.34e+02	6.7e+01	147.2417	0.3722	zSim	SED	Radio+Opt	138
VizieR	40469	0	BME 0946+0036	11	0.4	0.81	4850	2.75e+02	5.5e+01	147.2417	0.3722	zSim	SED	Radio+Opt	138
VizieR	40469	0	PMN J0948+0022	11	0.4	0.81	4850	1.76e+02	3.5e+01	147.2425	0.3708	zSim	SED	Radio+Opt	168
VizieR	40469	0	MITG J094856+0023	11	0.4	0.81	4850	1.74e+02	3.5e+01	147.2342	0.3892	zSim	SED	Radio+Opt	258
VizieR	40469	0	JVAS J0948+0022	11	0.24	1.44	8400	2.34e+02	4.7e+01	147.2388	0.3738	zSim	SED	Radio+Opt	0.33
VizieR	40469	0	FIRST J094857.2+002225	11	0.3	1.24	1400	1.11e+02	2.2e+01	147.2387	0.3738	zSim	SED	Radio+Opt	5
VizieR	40469	0	WB 0946+0036	11	0.3	1.24	1400	1.53e+02	3.1e+01	147.2417	0.3722	zSim	SED	Radio+Opt	120

UCD: pos.eq.ra

11 sel / 16 src 167fps / 243Mb

VIZIER PHOTOMETRY:

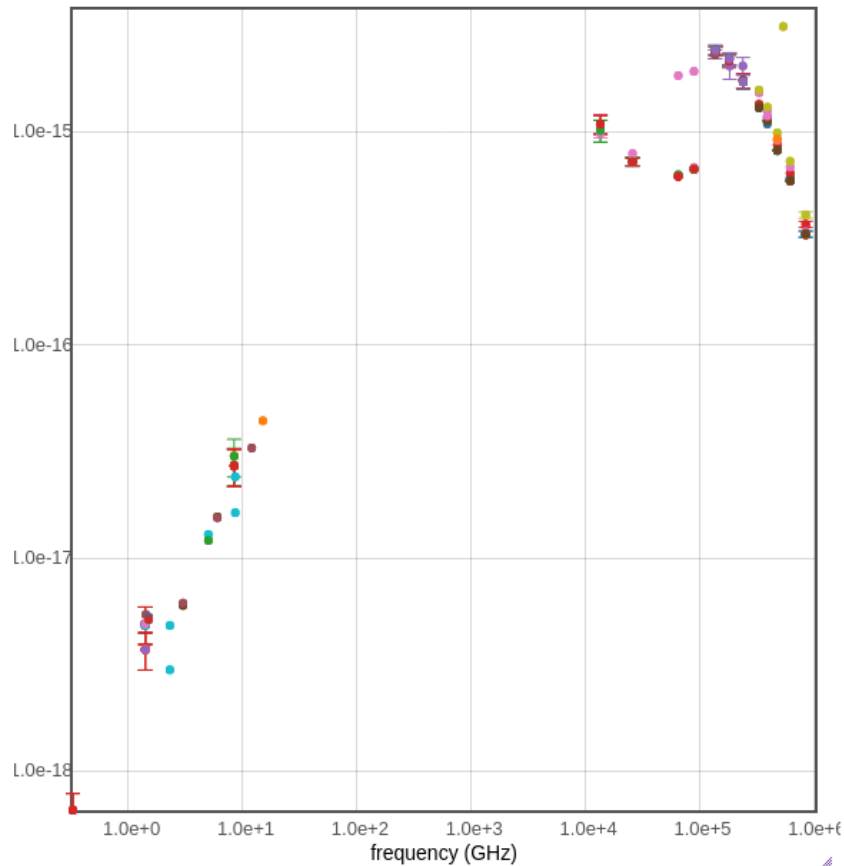
MWL SED

+

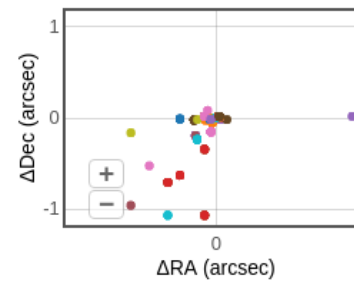
DOWNLOAD EXISTING DATA POINTS FOR FURTHER COMPARISON (VOTABLE)



QSO J0849+5108 (08 49 57.977+51 08 29.022),
radius : 10 arcsec



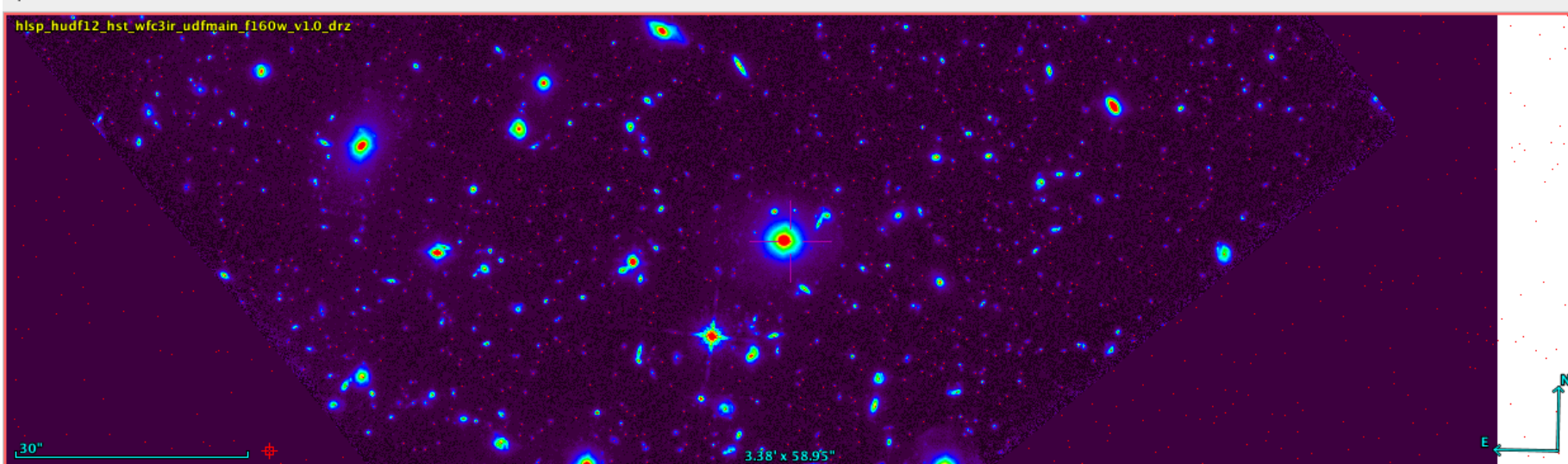
Mouse position:
Wavelength :
1.76e+2 μm
Frequency :
1.70e+3 GHz
Energy :
7.03e-3 eV
Flux density or $F(\nu)$:
6.69e-4 Jy
 $\nu F(\nu)$:
1.14e-17 W.m^{-2}
 $F(\lambda)$:
6.44e-17 $\text{erg.s}^{-1}.\text{cm}^{-2}.\mu\text{m}^{-1}$



Center (R.A.+Dec.):
08 49 57.977+51 08 29.022

reset zoom

+ STILTS TO CONVERT DATA FORMAT!



Mouse controls:

- Left: source selection.
- Middle: quick panning.
- Right: contrast adjustment.
- Wheel: quick zoom on the reticle.
- Simple-click: move the reticle.
- Double-click: re-center.

Let your mouse pointer on an object for discovering associated Simbad data.

☐ select
☐ pan
☐ zoom
☐ dist
☐ phot
☐ draw
☐ tag
☐ filter
☐ x-y
☐ rgb
☐ crop
☐ cont
☐ pixel
☐ prop
☒ del

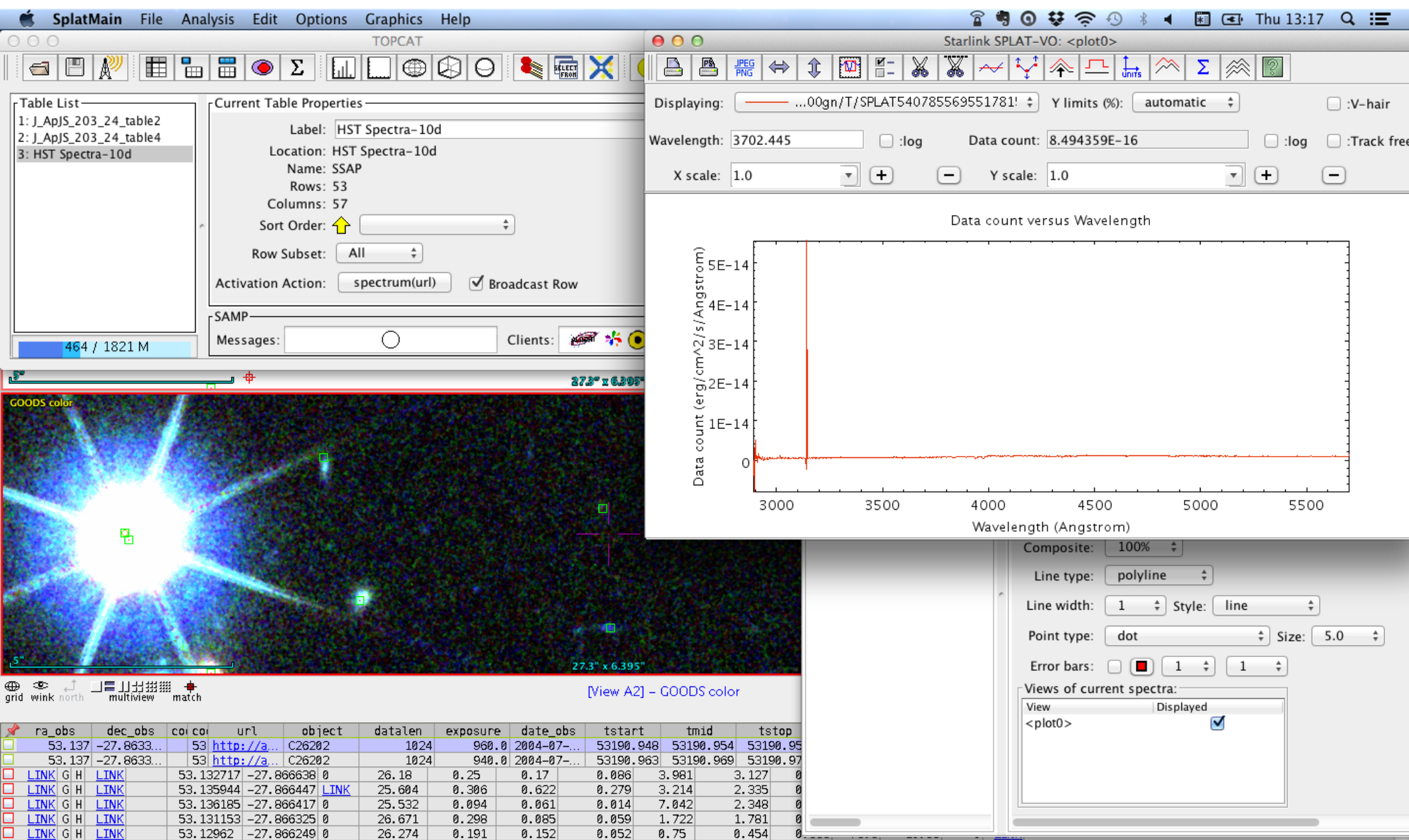
☒ JApJS_203_24.1
☒ hlsp_hudf12_hst
☒ GOODS color

epoch +
 size +
 opac. +
 zoom +

Frame: ICRS

+180 +90
 -90 -180

03:32:37.25 -27:47:29.4
3.38" x 58.95"



OUR NEEDS/FEEDBACK:

LACK OF SPECTRAL FITTING FOR
GALAXIES!

NOT JUST VIEWING THE SED, BUT
OBTAINING A QUICK FIT + PARAMETERS