



STARRY
STARS THAT 'R' YOUNG



Horizon 2020
European Union funding
for Research & Innovation



UNIVERSITY OF LEEDS



Isdefe

HERBIG STARS FORM IN CLUSTERS?

Alice Perez
University of Leeds

HD 200775

Basic data :

HD 200775 -- Herbig Ae/Be star

Other object types:

Or* (), * (HD,AG,...), ** ([Ref,**,...](#)), V* (NSV,V*,...), Y*? ([Ref,\[KWD2009\]](#)),
Em* (EM*,HBC), *iC (Cl*), *iN (VDB), Ae* ([Ref](#)), IR (2MASS), UV (TD1), X (2E)

ICRS coord. (*ep=J2000*) :

21 01 36.9210 +68 09 47.765 (Optical) [0.243 0.201 0] A [2016A&A...595A...2G](#)

FK5 coord. (*ep=J2000 eq=2000*) : 21 01 36.921 +68 09 47.77 [0.243 0.201 0]

FK4 coord. (*ep=B1950 eq=1950*) : 21 00 59.69 +67 57 55.3 [2.562 2.558 0]

Gal coord. (*ep=J2000*) :

104.0616 +14.1925 [0.243 0.201 0]

Proper motions *mas/yr* :

7.382 -1.264 [0.051 0.051 90] A [2016A&A...595A...2G](#)

Radial velocity / Redshift / cz :

V(km/s) -3.40 [1.8] / z(~) -0.000011 [0.000006] / cz -3.40 [1.80]
B [2006AstL...32..759G](#)

Parallaxes (*mas*):

2.98 [0.23] A [2016A&A...595A...2G](#)

Spectral type:

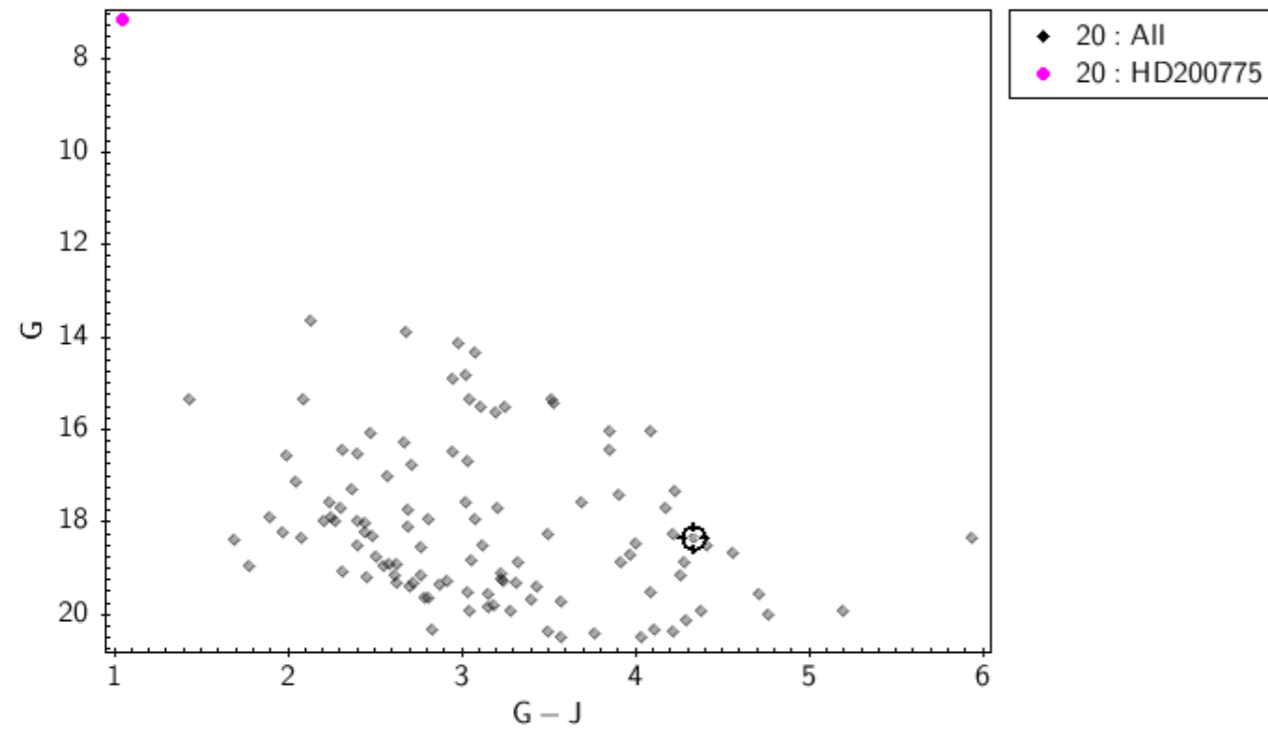
B2Ve C [1968PASP...80..197G](#)

Fluxes (7) :

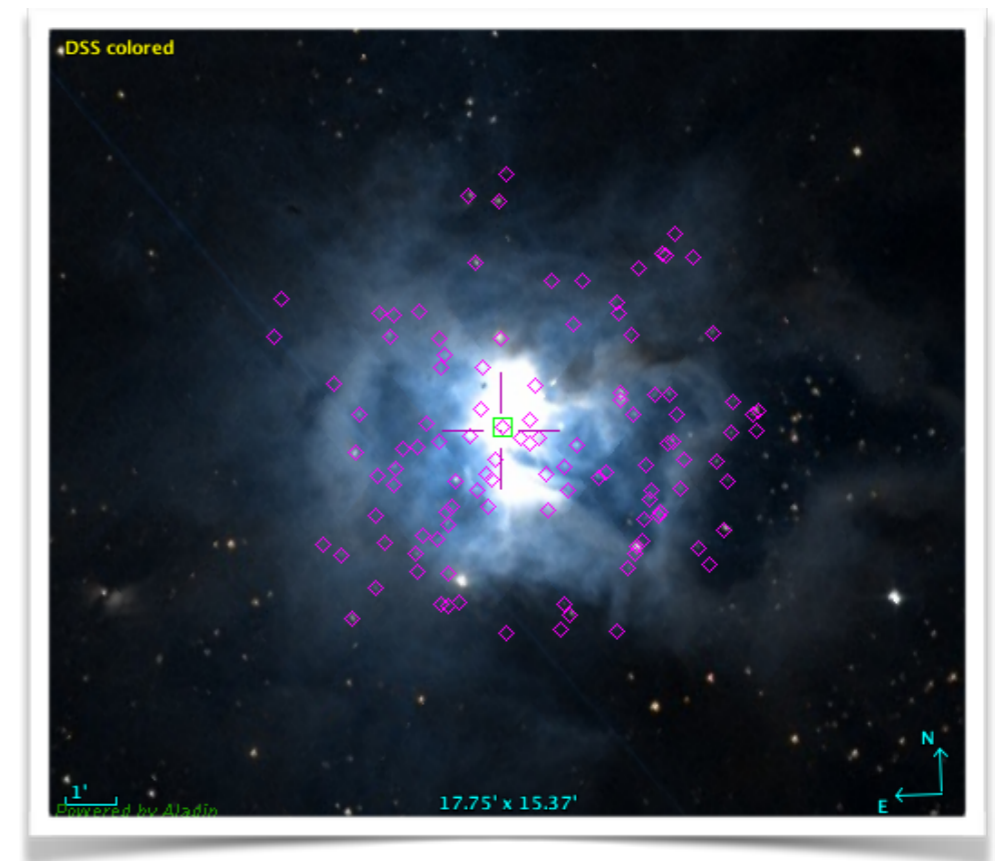
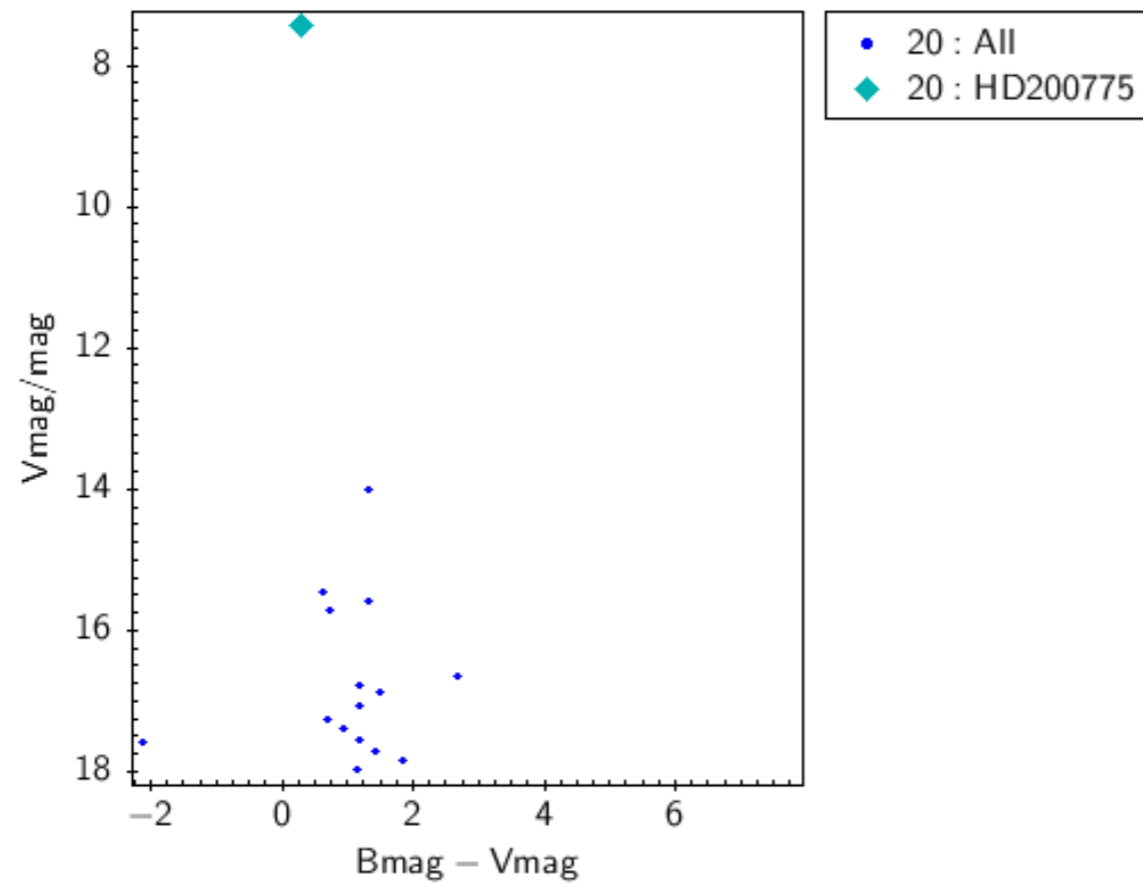
U 7.34 [~] C [2002yCat.2237....0D](#)
B 7.73 [~] C [2002yCat.2237....0D](#)
V 7.36 [~] C [2002yCat.2237....0D](#)
G 7.155 [0.001] C [2016A&A...595A...2G](#)
J 6.111 [0.030] C [2003yCat.2246....0C](#)
H 5.465 [0.031] C [2003yCat.2246....0C](#)
K 4.651 [0.017] C [2003yCat.2246....0C](#)



TOPCAT + ALADIN



Cross-match: GAIA + 2mass + NOMAD



VOSA

Kurucz models

► $D = 335\text{pc}$

► $A_V = 1.98$

